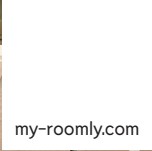
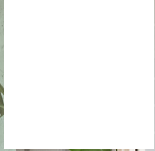


roomly



# loft

Modular wall elements  
made of steel and glass

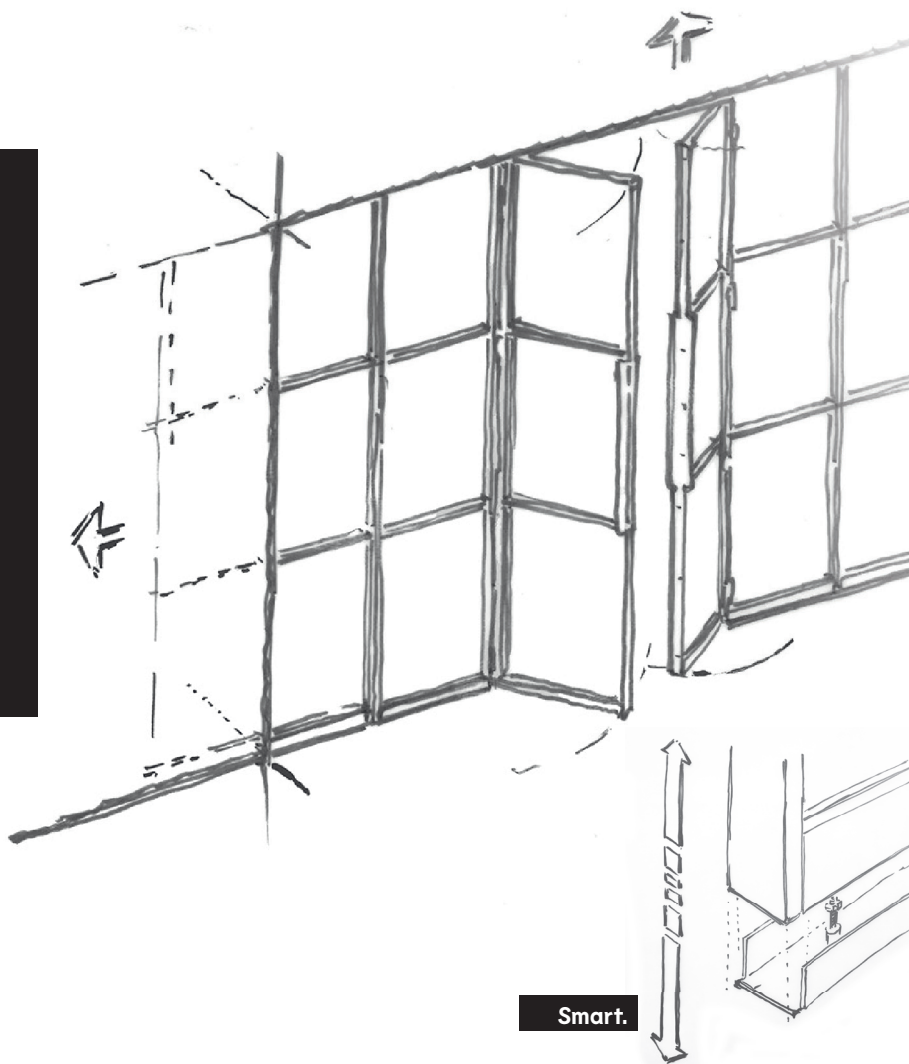
We are part of your room.



# loft

For an open living experience.

Thanks to the countless design possibilities, **loft** can sensibly divide large spaces according to your needs and form individual rooms or even room-in-room applications. With stylish walls made of delicate steel profiles and glass, modular floor plans can be created without losing the original open space design.



Cutting-edge technology, truly harmonious.

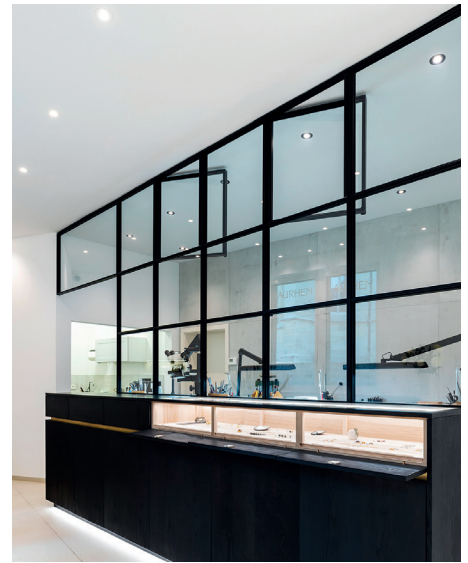
The true beauty of loft lies in the details and may not necessarily be visible at first glance. However, for those who look closely, they will recognize the many clever and unique features.

**Smart.** loft elements are extremely easy to assemble – without visible screws and with simple height adjustment. For uneven surfaces, up to 12 mm (-6/+6mm) can be leveled out for fixed element structures.

**Clever.** Various fillings made of glass and other materials can be inserted and changed out as desired – completely simple and entirely without tools. Simply click in and you're done.

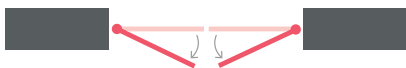


**Stylish.** The delicate 50/10 steel profile is structurally extremely stable, and the dimensional depth effect is created through continuous, visible connections – because we say „no“ to glued-on, flat window muntins. For a harmonious design, the division of elements follows the principles of the golden ratio.



## Customizable design for every requirement.

For those who like open spaces but sometimes want to close the door. Various movable and fixed elements bring an extra component of flexibility to the design. Need privacy or curtains? There are clever solutions for that too.



Double-leaf door



Swingdoor



Swinging door



Fixed element



Sliding door



Folding door

The steel elements can be produced in any RAL color.



For **loft**, doing things right, immersing ourselves completely in the subject matter, and uncompromisingly seeking the best solution is an unwritten law for us. And that's exactly what we've done with **loft**.

Where do I belong

- into all interior spaces.
- as a flexible room divider.
- I'm quiet, but I'm not soundproof.
- I am industrial style for the ages.

- If you're missing a measurement sheet, need instructions for the perfect setup of the inlays or more inspiration, look here.



→ **I am your loft, 0% frills,  
100% genuinely roomly.**

**Questions? We, the roomly experts,  
Frank and Thomas are happy to help.**

TEL +49 (0)7544 9530 700

hello@my-roomly.com